



£464,950

Woodside, Crich , Matlock DE4 5FX

Detached House | 4 Bedrooms | 3 Bathrooms

01773 820983

DERBYSHIRE
PROPERTIES
SALES & LETTINGS

www.derbyshireproperties.com



Step Inside

Key Features

- Freehold
- Detached house with single integral garage
- Landscaped front garden, turf and patio area to rear garden
- Fitted wardrobes and en-suite to master bedroom
- En-suite to bedroom 2
- FTTP Ultra Fast internet provision
- Solid surface worktops to kitchen & utility room
- Floor tiling to kitchen/diner and utility room
- Energy rated integrated appliances
- 10 Year NHBC Buildmark warranty

Property Description

The Medway is a four bedroom detached house available at £464,950 on Plot 57 ***please note this plot is currently under construction & available to reserve off-plan***

Main Particulars

The Medway is a four bedroom detached house available at £464,950 on Plot 57

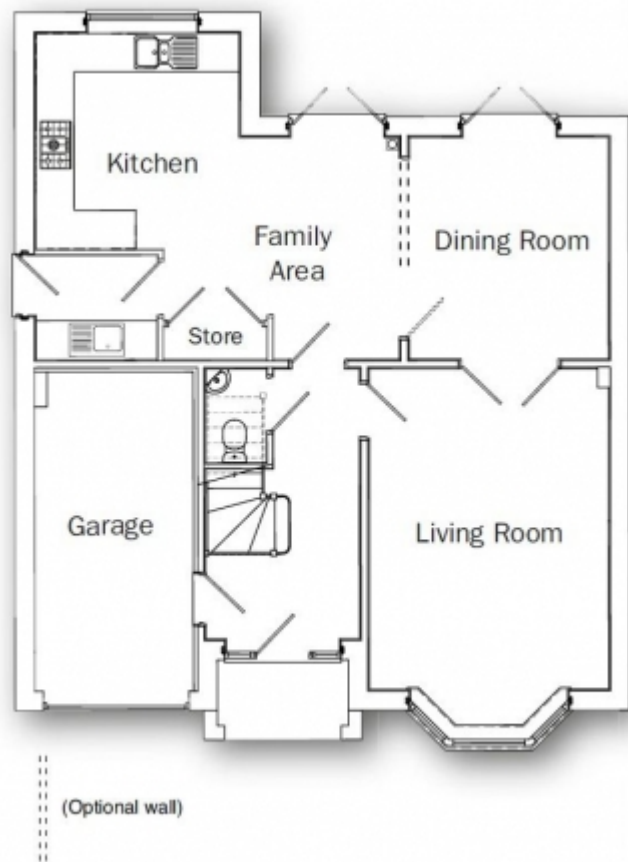
please note this plot is currently under construction & available to reserve off-plan

The Medway is a welcoming and spacious four bedroom home offering bright and contemporary living. The ground floor incorporates a large family dining/breakfast kitchen with adjoining optional/separate dining room. Both areas have French doors leading out to the rear garden. The front of the house hosts a delightful living room with bay window. The light and attractive hallway also offers access to the integral garage. A utility room and cloakroom WC complete the ground floor.

The first floor offers an amazing galleried landing with feature window, four good sized bedrooms and a family bathroom. The master bedroom benefits from fitted wardrobes and en-suite, complimented by bedroom two also boasting an en-suite.

The Standings, Crich The Standings is a welcome return to the area for Wheeldon with this striking development of quality family homes, set in the picturesque Derbyshire village of Crich. Choose from individually designed house styles, all spaciouly set over two floors, the three, four and one five bedroomed homes have a host of benefits which combine to provide a range of accommodation designs, offering you a home of real character and individuality.





This floorplan is for illustrative purposes only and the location of doors, windows and other items are approximate.

Telephone: 01773 820983

DERBYSHIRE
PROPERTIES
= RANGING A LITTLE MORE =

www.derbyshireproperties.com